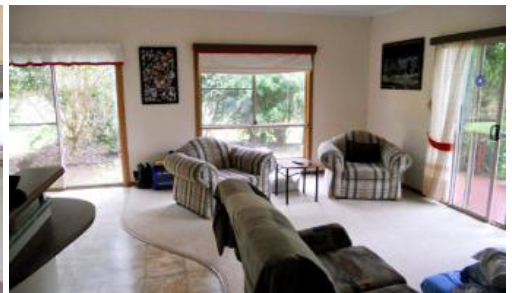




122 Elms Rd, Wondecla



6 Acres of joy behind Mount Hipipamee National Park

Lovely three bed room home with granny flat. Tree lined block with open field area's for your animals or play. Open plan living with views all round both private and quiet. Large veranda for entertaining at the rear of the house and patio at the front. Centrally located 18 minutes to Atherton. 0415906711

The above information provided has been furnished to us by the vendor/s. We have not verified whether or not that information is accurate and do not have any belief in one way or the other in its accuracy. We do not accept any responsibility to any person for its accuracy and do no more than pass it on. All interested parties should make and rely upon their own inquiries in order to determine whether or not this information is in fact accurate.

4
 2
 6
 2.42 ha

Price	SOLD for \$435,000
Property Type	Residential
Property ID	213
Land Area	2.42 ha

Agent Details

Chris Hearne - 0415 906 711

Office Details

Ravenshoe
 56 Grigg St Ravenshoe QLD 4888
 Australia
 07 40976630

TOP OF THE
TABLELANDS
 REALTY